

4200 E. North Street; Suite 20



Office Condo For Lease

- ♦ \$12.00 per sq/ft
- ♦ \$2.60 NNN per sq/ft
- ♦ \$390.00 NNN per month
- ♦ 1,300 s.f. (1st level)
- ♦ 500 s.f. (2nd level)

- ♦ Located at the corner of East North Street and Mitchell Road
- ♦ Lit Intersection
- ♦ Zoned POD in Greenville County



Graham Hardaway

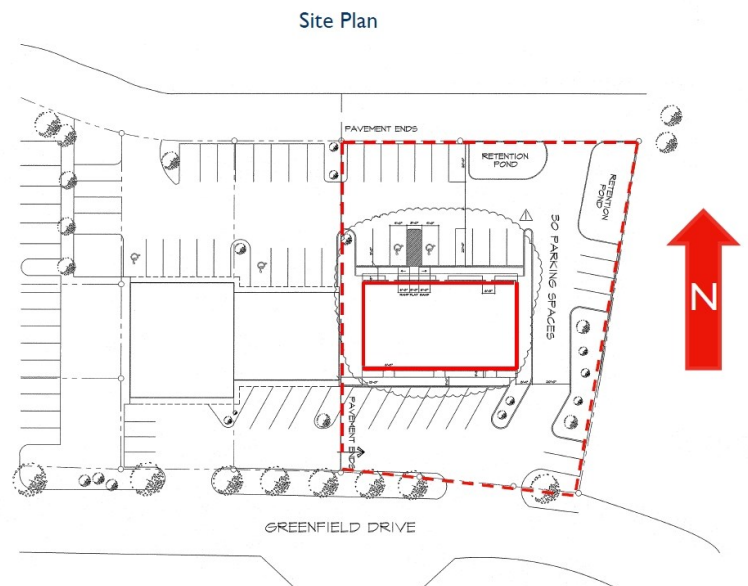
Commercial Broker

864-420-1332

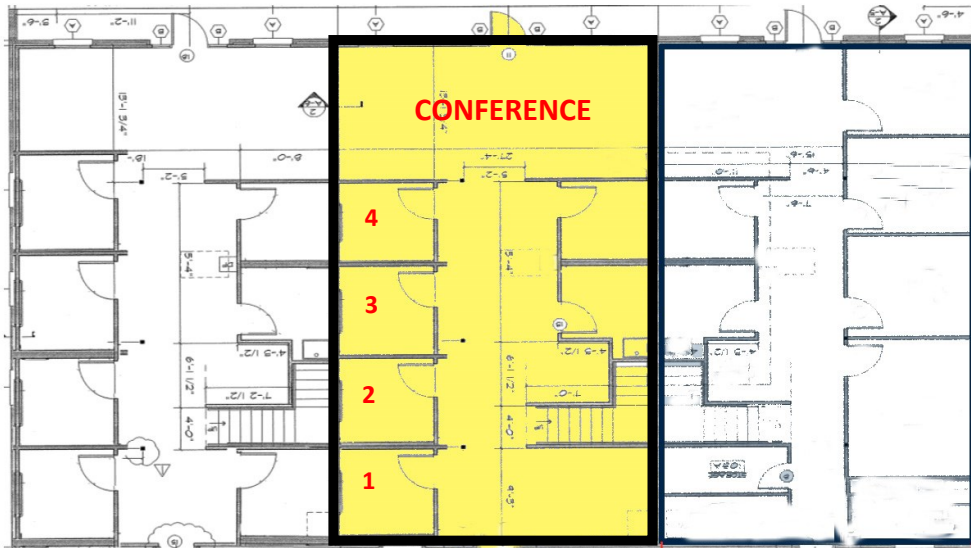
ghardaway@accessrealtysc.com



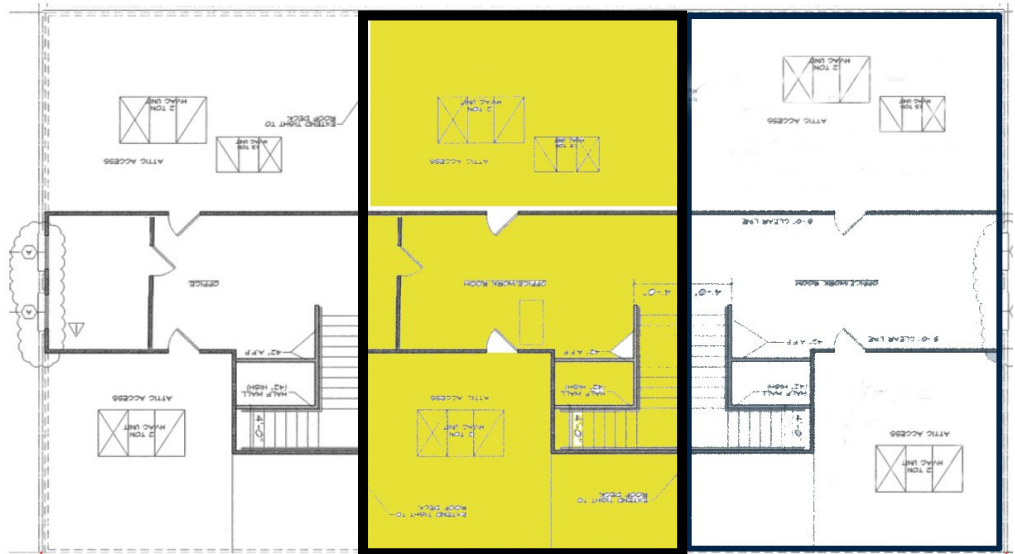
Graham Hardaway
Commercial Broker
864-420-1332
ghardaway@accessrealtysc.com



First Floor



Second Floor



1ST FLOOR

- ♦ 1300 sq/ft
- ♦ 4 Private Offices
 - ♦ Kitchen
- ♦ Conference Room

2ND FLOOR

- ♦ 500 sq/ft
- ♦ Large executive office with private bathroom

Graham Hardaway

Commercial Broker

864-420-1332

ghardaway@accessrealtysc.com



Information contained herein has been obtained from the owners or from other sources deemed reliable. We have no reason or doubt its accuracy, but regret we cannot guarantee it. All properties subject to change or withdraw without notice.