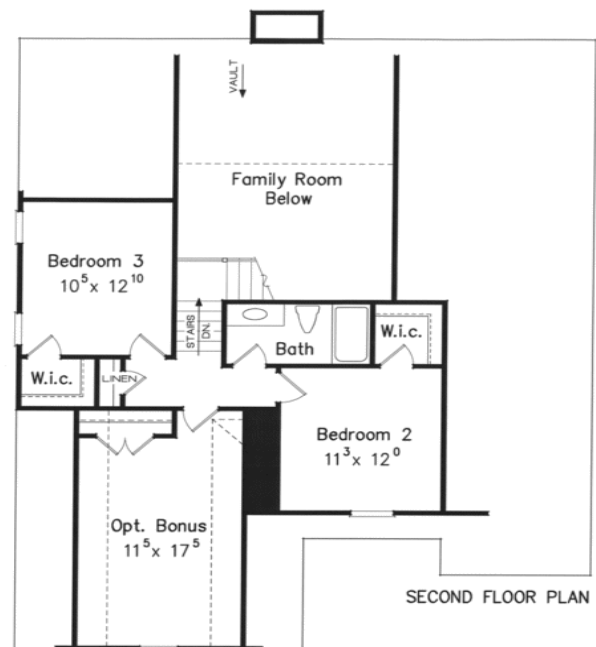
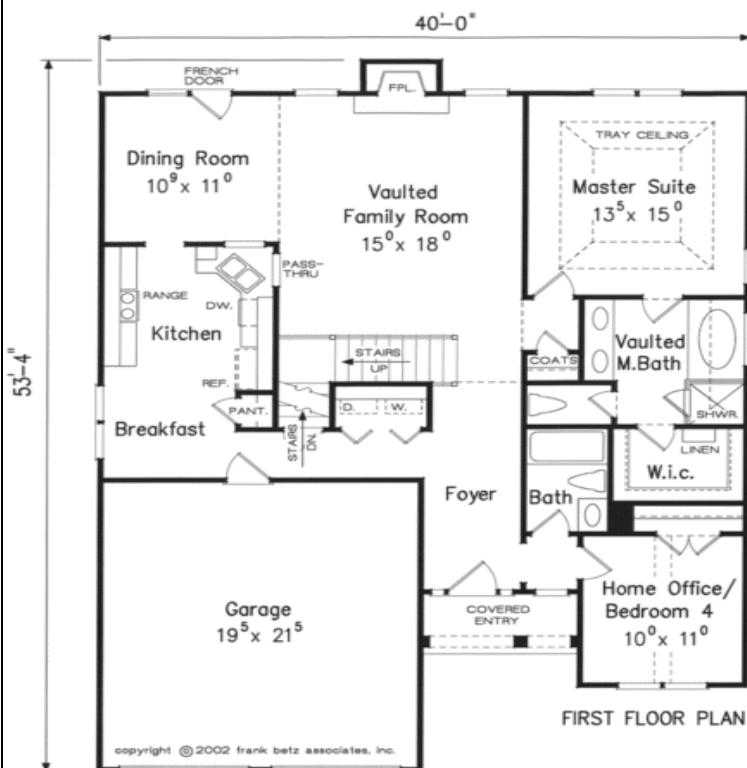


Maggie's Meadow - The Cherbourg



4 Bedroom 3 Bath

1867 total sq. ft. (1410 sf 1st Floor/457 sf 2nd Floor)



Included Features

Exterior Features

- Craftsman Style Architecture
- Landscaping with Fully Sodded Yards
- 30 Year Architectural Shingles
- Concrete Driveway, Walkway, and Patio
- Gutters and Downspouts
- Carriage Style Garage Door w/ Hardware
- Garage Door Opener – Prewired
- Multi-Zone Lawn Irrigation System
- Front and Rear Exterior Faucets and Receptacles

Interior Features

- Sherwin Williams 3-Tone Interior Paint
- 9 Foot and Higher 1st Floor Ceilings
- Smooth Ceilings
- Mohawk Carpet
- Hardwood Floors in Foyer
- Brushed Nickel Lighting Package
- Cultured Marble Bath Vanity Tops
- 35 Inch High Vanities
- Comfort Height Toilets
- Cable/Phone 6-Drops
- Kwik-Set Brushed Nickel Door Hardware
- Delta Chrome Bath Fixtures
- Light Fixtures and Ceiling Fan Prewired in all Bedrooms and Great Room
- Pull Down Attic Stairs
- Gas Fireplace – Per Plan

Kitchen Features

- Oak Panel Cabinetry
- Granite Counter Tops – Level 1
- Double Bowl Stainless Steel Sink
- Recessed Lighting – Per Plan
- Delta Brushed Nickel Kitchen Faucet
- Frigidaire Stainless Steel Appliances
- *Range/Oven *Microwave *Dishwasher

Additional Features

- Trane HVAC System
- Programmable Digital Thermostats
- Ply Gem Single 1500 Series Single Hung Windows
- Builder supervised job site
- Guided Construction Meetings with your Project Manager
- 10 Year Structural Builder's Warranty



www.ApexdevelopmentSC.com

**Apex Development reserves the right to make changes to above listed features without prior notice. Should the above item not be available Apex Development reserves the right to substitute at equal or better quality to not delay home*